

1. Instructions for disassembling and assembling the front door of the new 5 series  
Before installing the illuminated cover plate on the original car



2. Use a pry board to pry open the triangular position of the original car



3. Pull outward to remove the triangular trim panel



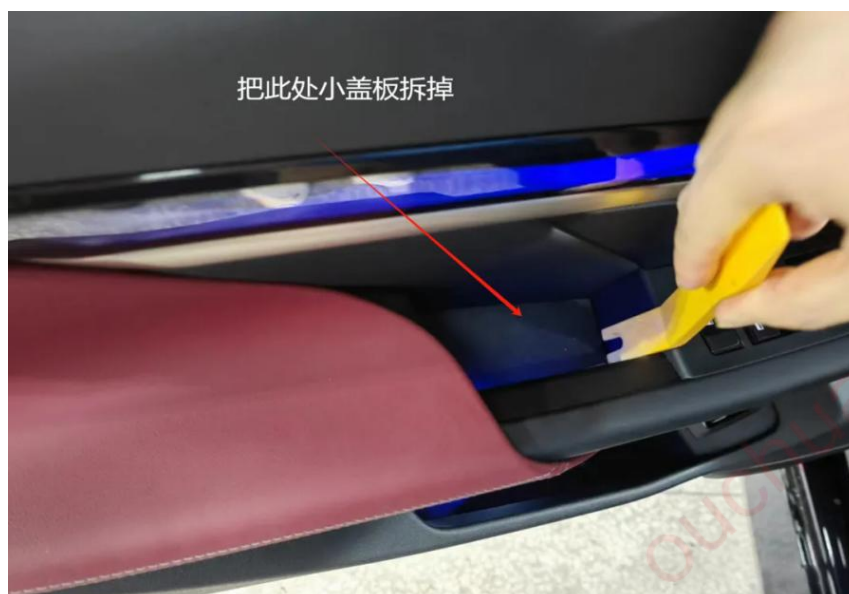
4. Break open the handle of the original car and remove the small cover inside



5. After removing the small cover, remove the fixing screws



6. Remove the small cover plate here



7.Remove the screws here



8. There are two screws on the front door. After removing the screws, use a pry panel to remove the door panel

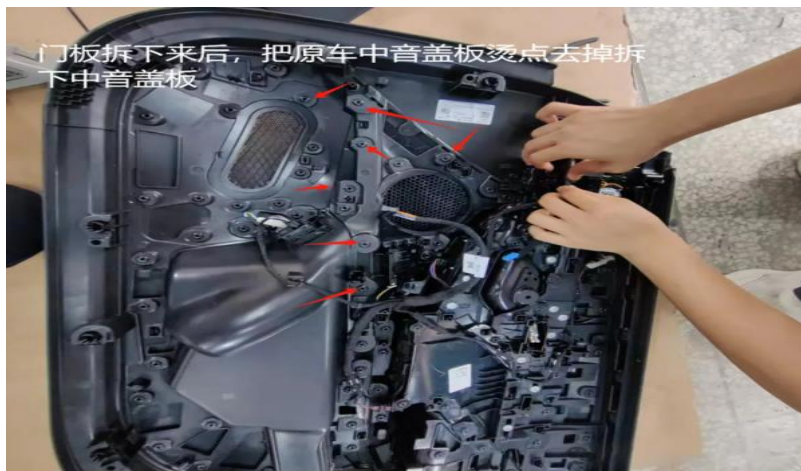


9. After removing the door panel, unplug the plug

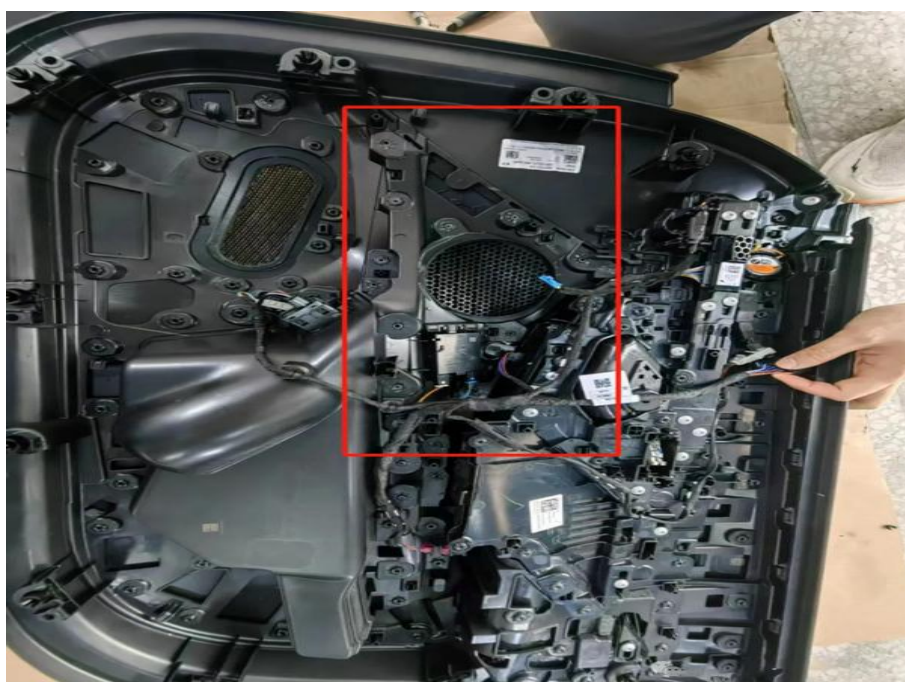




10. After removing the door panel, remove the hot spots on the original car's mid tone cover plate and remove the mid tone cover plate



11. Use scissors to heat off the midrange cover fall



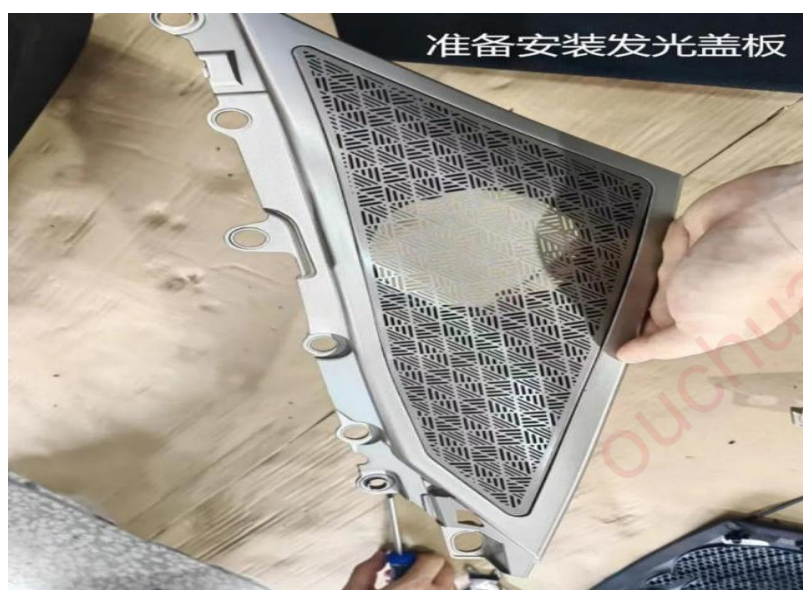
12.The effect of removing the original car's mid tone cover



13.Original car mid tone cover plate



14.Prepare to install the illuminated cover plate





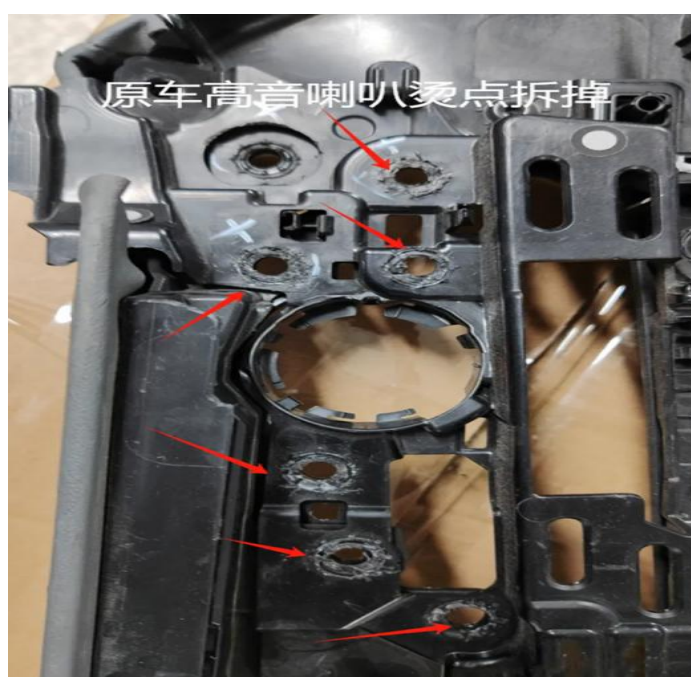
15.The effect of installing the mid-range cover.



16.After replacing the cover plate, lock the screws that have been prepared.



17.Remove the hot spots on the original car's high pitched horn.



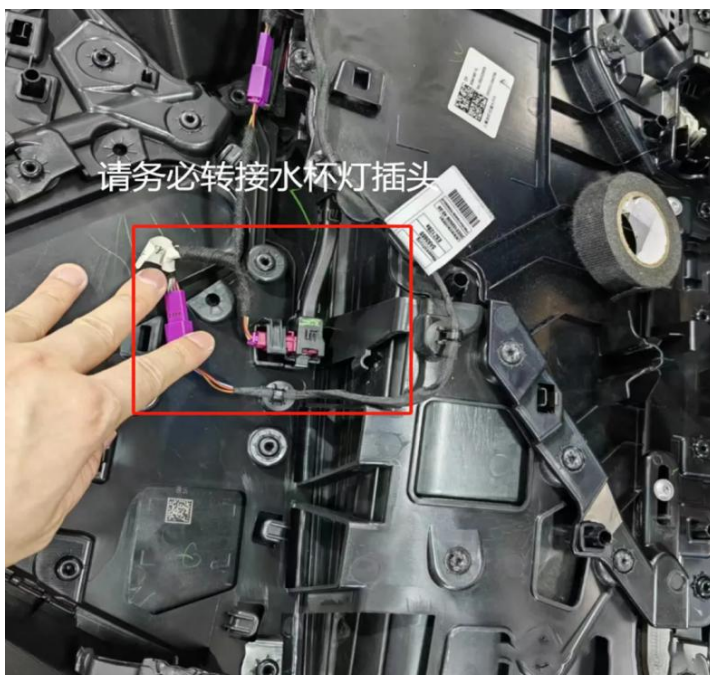
18. Install the cover plate and lock the screws.



19. Insert the luminous cover plug. Be sure to connect to this plug, otherwise the ambient light will turn white after addressing.

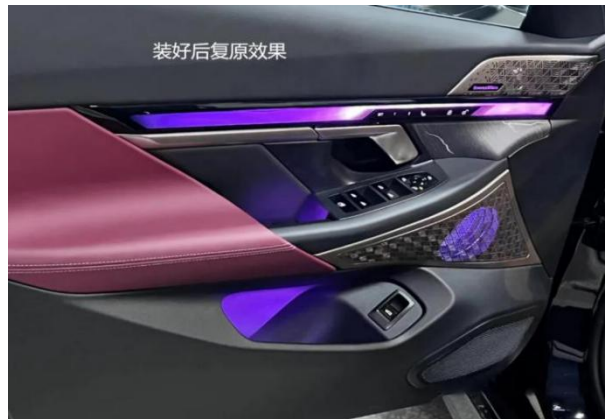


20. Please make sure to connect the water cup lamp plug.





21.Restoration effect after installation.



22.Method for disassembling and assembling the rear door luminous cover plate  
Remove this cover first



23.After removing the lid, remove the screws.





24.Remove the cover here.



25.After removing the cover, remove the screws.



26.Remove the lid here.



27. After removing the lid, remove the screws



28. There are three screws in the back door. After removing the screws, use a pry panel to remove the door panel



29. Remove the door panel





30. Use scissors to remove the hot stamping column, and then remove it  
Mid range cover



31. Remove the hot stamping column



32. Remove the original car's mid tone cover plate



33. Install the rear door mid tone luminous cover plate



34. Lock the screw



35. Please transfer the lamp holder here





36. Install and restore

